

Trust Board – 3<sup>rd</sup> August 2012  
Agenda item: 2.1

Surrey and Sussex   
Healthcare NHS Trust

# Emergency Department Audit

**Presenter: Emad Jasem**

**Job Title: Emergency Department Doctor (Minors)**

**Author: Sarah Dalglish**

**Job title: Practice Development Nurse**

*Putting people first*  
*Delivering excellent, accessible healthcare*



An Associated University Hospital of  
Brighton and Sussex Medical School

# Majors audit of 8 days

Surrey and Sussex  
Healthcare NHS Trust



from 21<sup>st</sup> May to the 28<sup>th</sup> May 2012 (inclusive)

## Total attendance was 1900 (average of 237 patients per day)

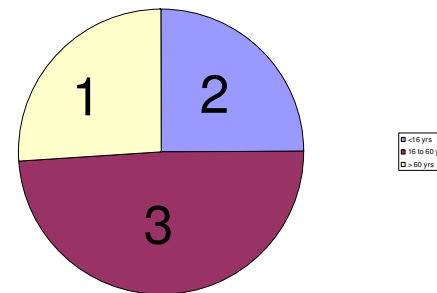
- 639 patients brought in by ambulance (30%)
  - 6% of those were seen by minors
  - 94% were seen by the main Emergency Department

## Only 588 (30.9%) were admitted to the hospital

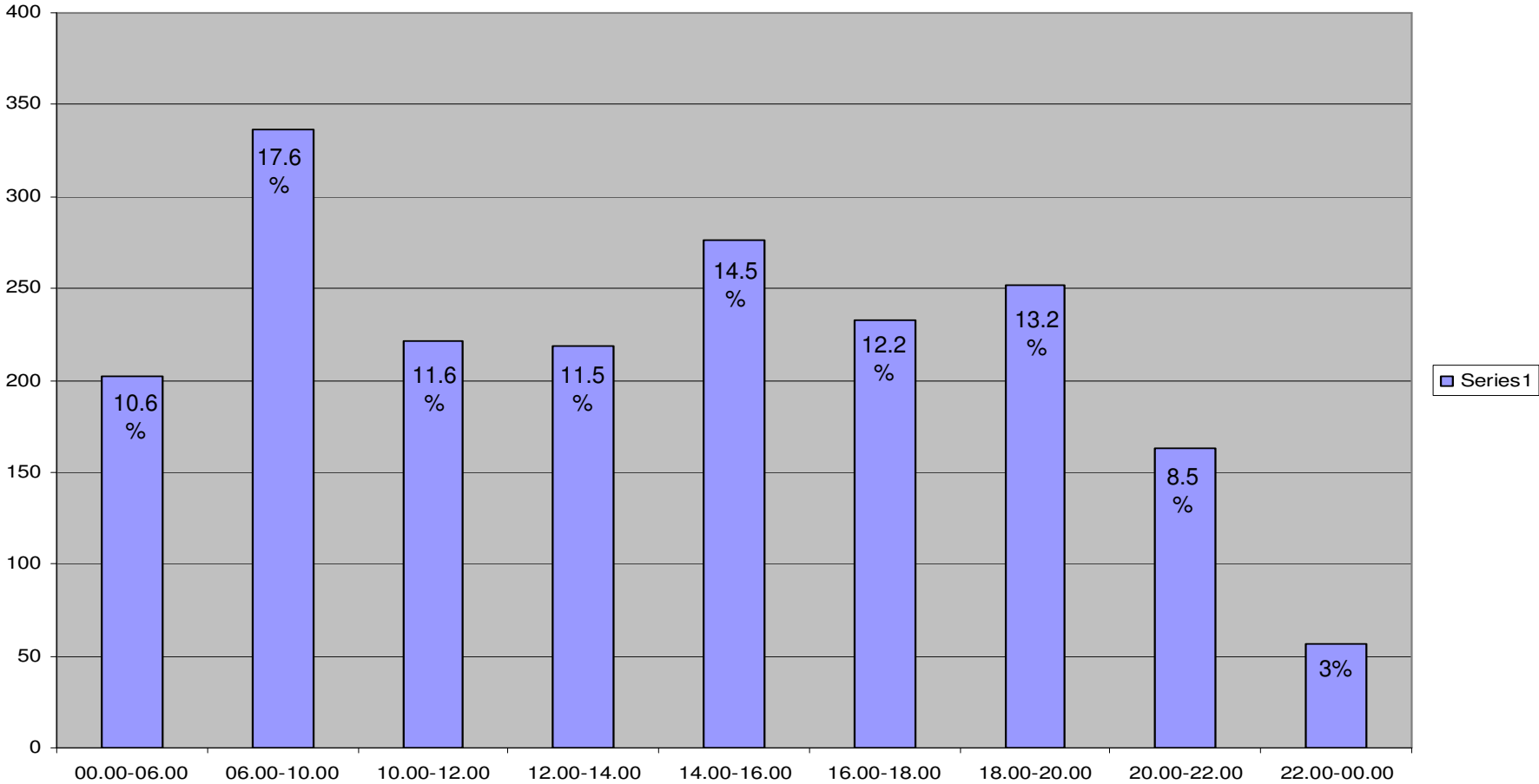
- (368/62%) of those were ambulance attendances. (19% of the total)

## Age range

- <16 yrs = 465 (24%)
- 16-60 yrs = 914 (48%)
- >60 yrs = 521 (28%)



# Attendance times over 8 days



# Minors audit of 8 days

Surrey and Sussex  
Healthcare NHS Trust



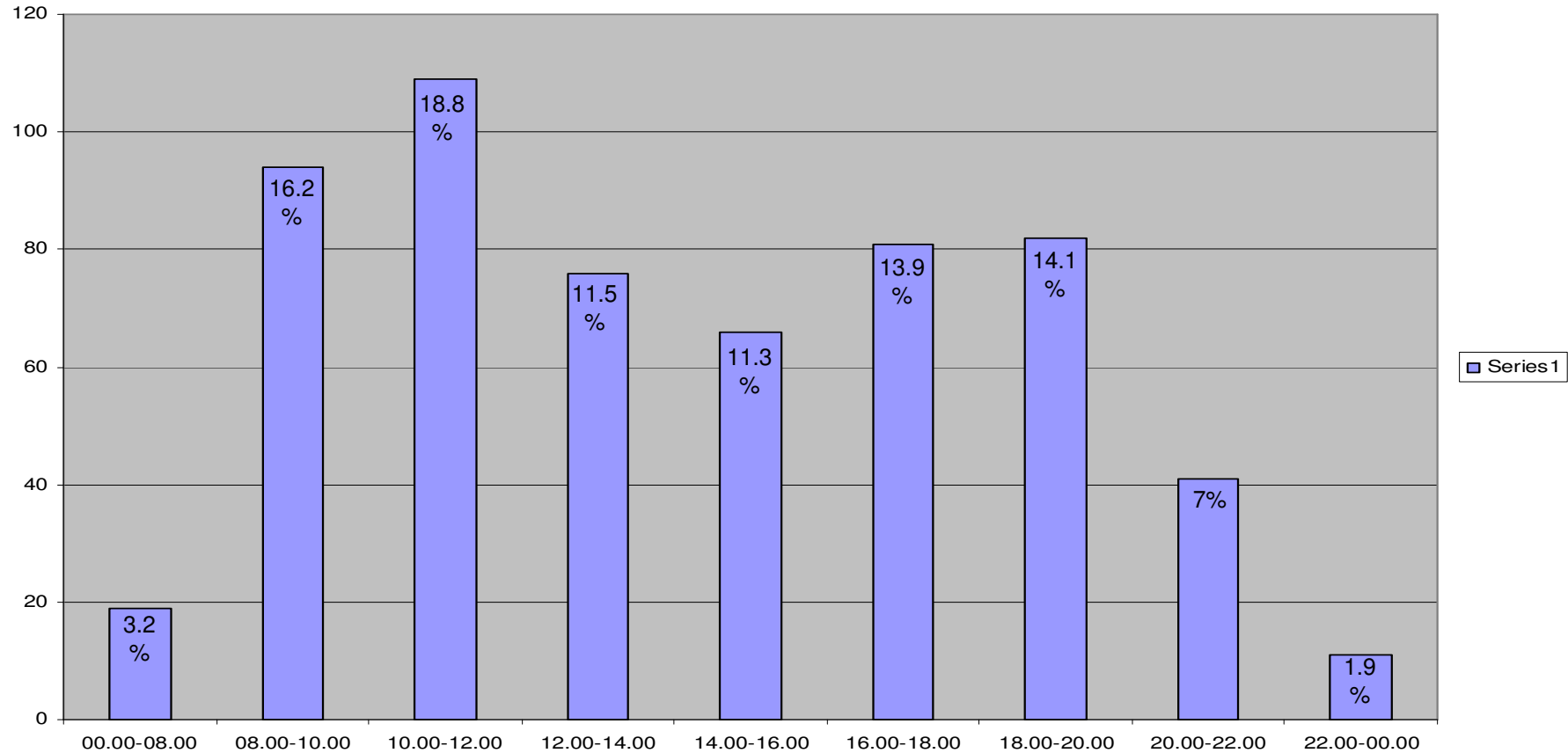
from 21<sup>st</sup> May 2012 to 28<sup>th</sup> May 2012 inclusive

**Total minors attendance was 579 (average 72 patients per day)**

- Patients brought in by ambulance were 40 (6%)
- Patients with injuries 356/ 61.4% , **around 40% primary care patients.**
  - Age < 16 years 103 pt =18%
  - Age 16-60 years 371= 64%
  - Age > 60 years 105=18%

**Only 16 minor's patients were admitted to the hospital (3 to CDU)**

# Ambulatory attendance times over 8 days for minors



# Outcome of audit

## The Emergency Department needs to:

1. Communicate with the local GP surgeries within Surrey and Sussex
2. Ensure GP surgeries offer appointments for their patients and provide them with appropriate information on where they can be seen i.e. other Primary care services not the Emergency Department.
3. Advise the local ambulance service (SECAMB) to utilise Caterham dene's RAC (rapid access centre), and the CUTC (Crawley Urgent Treatment Centre) located within Crawley Hospital.